



- Production House & Head Office**
- ★ **Head Office**
Najafgarh, Delhi
 - **Production House**
Mundka Industrial Area, Delhi
 - **Sales & Service**
Haryana, Punjab, Himachal, J&K
Rajasthan, Uttrakhand, UP, MP, Bihar,
Jharkhand, West Bengal, Assam,
Nagaland, Nepal

SKON S.K ENGINEERING

Head Office : Plot No. 101, Gali No. 9, Dichaon Enclave, Shis Park, Najafgrah - 110043 (Delhi)

Factory : Ground Floor Plot at Kh. No. 113/5/2 Udyog Nagar Mundka Industrial Area, New Delhi - 110041 (Delhi, India)

Email : skengineering966@gmail.com | **Website :** skroadequipment.com

Mob.: +91 9811756332, 9667858073, 9931213127, 9667658073

SKON S.K ENGINEERING

AN ISO 9001 : 2015 CERTIFIED CO.

INVARIABLE RAISE



Mini Plant



Four Bin Feeder



Road Roller



Paver Finisher

Email : skengineering966@gmail.com | **Website :** skroadequipment.com

SKON DRYING DRUM

- Flight design for optimum heating of all aggregates
- Drive through friction drive or chain drive
- Built on heavy guarder's structure

Option :-

- Insulated with S.S. sheet and rock wool

SKON FOUR BIN FEEDER

- Type - Folding top boarder
- Heavy garter used foundation
- Bins are make of M.S. Plates having long life
- Best quality of bearings are used for conveying system for material
- Branded Belt conveyor are used to conveyor the material

Option :-

- More than one design
- Technical bonded design
- Emergency stop system
- Industrial super quality of Motor and Gear Boxes are used

SKON POLLUTION CONTROL UNIT

- Sufficient to control the pollution in environment which is destructive against living beings on the earth
- Filling system separates dust and water

Primary Dust Collecting Unit (Cyclone System)

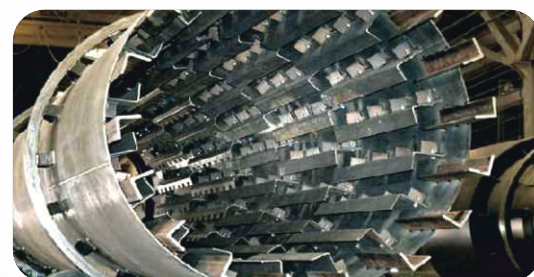
- Dust Collectors from drying drum, vibrating screen and hot bins before they enter in mixing drum compliments the secondary dust collectors.

SKON WMM PLANT

- Feature of Wet Mix Macadam Plant :-
- Modern Wet Mix Macadam 80-120 TPH

SKON CABIN

- Produced High Quality Mix Portable or stationary
- Highly Accurate Aggregate & Additives feeder
- Easy to Operate



SKON MINI PLANT

- This is a mobile automatic asphalt plant having 20-30TPH which is used in hilly areas or for low scale projects.
- This plant have no need of crane for erection
- It can be erection within 2-3 days without requirement of supportive machineries needed for erection
- This is an elegant mini plant which words without having environment or anyone

SKON ASPHALT PAVER FINISHER

- WM-6 HES is fitted with a power steering for ease of operation, a 105HP @2000rpm engine for enhanced power and oil disc brakes. The bearing pedestal is Protected from dust. The Hydraulic extension are eliminated and the screed width can be easily varied between 2.5 M to 4.5 M hydraulically.

Long Life

- The Sturdy Construction using quality components leads to long years of trouble free performance, even in adverse conditions

SKON BITUMEN TANK

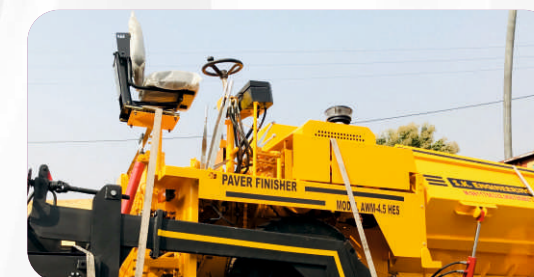
- We are exporting of Bitumen tanks having capacity from 10 tons to 50 tons.
- Inner wall fabricated from 5mm thick M.S. Plate External insolation with Ceramic Wood (Glass wool) is 50mm and covered with 18g. The asphalt pump coupled with reduction gear box and powered by a variable speed DC motor.

SKON PANEL

- A full Automatic Control Panel is provided for Controlling the quantity and quality of production with operator sitting in Air-conditioned comfort
- Used for Control the Plant Operation
- Fully AC Fitted for Operator.

SKON BROOMER

- This is very easy to use at site for removal of the road dust easily on metaling, wet mixed macadam surface & Asphalted road surface
- This is zero maintenance machine for faster work and uses very low man power





BITUMEN DECANTER

- This decanting machine also stores and transfers liquid bitumen to tanks.
- Heating is by use of thermic fluid system with automatic burner.



PUGMILL UNIT

The unit incorporates a proven design for fast continuous and homogeneous mixing of aggregate and water. The Pugmill is designed vibration free with other trouble free function and longer life. the shafts are mounted additional heavy-duty anti-friction bearings



STATIC ROAD ROLLER

- A road roller is a compactor type engineering vehicle used to compact soil, gravel, concrete. Asphalt in the construction of roads and foundations Similar rollers are used also at landfills or in agriculture.
- Used in road construction for press the soil and mixed bitumen & stone.
- Water system on wheel for clean the wheel.



TAR BOILER

- Fabricated with 5mm M.S. plates
- Seamless pipes are used for heating system
- Isolated with Rock wool (Heat resident wool) and M.S. sheet 18g.
- Easy and smooth carrying system to move it from here to there.
- Better quality of tyers and long life of Burner



AIR COMPRESSOR

- We provide air compressor having pressure 6kg
- Fitted on heavy Structure
- Our Compressor have smooth and better performance for a long period.



MINERAL FILLER UNIT

- We have marketed a remarkable and dynamic position in this domain by providing a high quality array of mineral filler unit
- Filler stock hopper with rotary valve arranged with Blower.



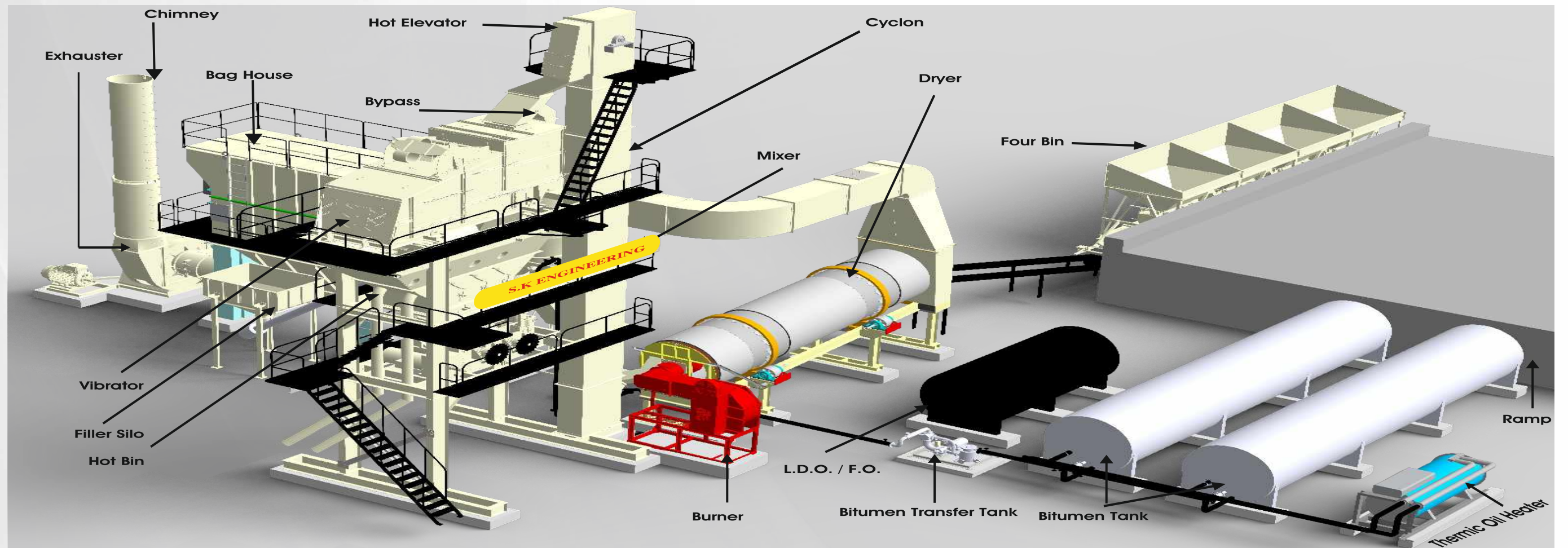
ASPHALT HOT MIX PLANT

Technical Specification of S. K. Asphalt Hot Mix Plant

	Per	DM-35	DM-45	DM-50	DM-60	DM-65
Capacity@3% moisture content	Tph	45	60	90	120	150
Cold Feed Bins						
No. of Bins / Total Storage Capacity	No./M³	4/20	4/20	4/25	4/31.25	4/37.5
Auxiliary Drive	kW	1.1	1.5	1.5	2.2	2.2
Auxiliary Conveyor Belt	mm X mtr	450 X 2.2	450 X 2.2	450 X 2.9	450 X 3.78	450 X 3.78
Charging Width	Mtr	2.55	2.55	3.05	3.66	3.66
Gathering Conveyor Drive	kW	3.7	3.7	3.7	3.7	5.5
Gathering Conveyor Belt	mm X mtr	500 X 22.4	500 X 22.4	600 X 25.6	600 X 29	600 X 29
Feeding Capacity	Tph	80	100	120	150	200
Singer Conveyor						
Conveyor Drive/Width	kW/mm	3.7/500	3.7/500	3.7/500	5.5/500	5.5/500
Thermo Drive/Width						
Dryer(LxD)	mtr X mtr	1.23 X 6.02	1.54 X 6.4	1.54 X 6.7	1.85 X 7.31	1.85 X 8
Drive Type	4W Chain Drive					
Drive Motor	kW	15	18.6	18.6	30	44
Driver Gear Box	Heat Duty Worm Gear					
Burner Unit						
Burner Capacity	lph/MW	250/3	350/3	550/6.5	770/9	1100/13
High Pressure Burner Type	Fully Automatic					
Fuel	Diesel					
Blower Connected Power	kW	7.5	11.25	15	15	18.7
Bitumen Transfer Pump						
Capacity	Lpm	60	80	120	160	200
Pump Type	-Hot Oil jacketed gear type					
Drive Type	AC variable Speed Drive					
Discharge System						
Load Out Conveyor Belt	mm X mtr	500 X 17.9	500 X 17.9	600 X 17.9	600 X 20.3	600 X 20.3
Gob Hopper Capacity	Ton	1	1	1.5	2	2

Pollution Control Unit (Optional)

Wet dust type Collector	
Type	Extreme turbulence venturi
Dust Emission	Less than 150mg/m ³
Bag House Filter	
Type	Reverse Air Flow System
Dust Emission	Less than 150mg/m ³



ASPHALT BATCH MIX PLANT LAYOUT



ASPHALT HOT MIX PLANT LAYOUT